



Comprehensive Tumor Profiling

A better guide for
Molecular Intelligence





Why Caris?

With the promise of precision medicine becoming a reality, molecular profiling has become standard of care for many cancer types – and required for certain therapies (companion dx). More than ever, oncologists need a trusted tumor profiling partner to provide reliable, high-quality molecular information to guide more precise and individualized treatment decisions.

Caris Molecular Intelligence® identifies key molecular features of cancer and provides clinical insights to aid oncologists in personalizing cancer therapies for their solid tumor cancer patients. Caris Molecular Intelligence helps oncologists:

- **navigate among therapies with potential benefit;**
- **identify therapies that may not have been considered;**
- **determine drugs with potential lack of benefit (avoiding unnecessary toxicities and costs); and**
- **match patients to clinical trials.**

The Most Experienced Comprehensive Tumor Profiling Provider



Unmatched Experience

- 2,800,000+ tests completed
- 225,000+ clinical cases performed



Immunotherapy Diagnostics Expertise

- PD-L1 by IHC, including TPS and CPS scoring methods
- Mismatch Repair (MMR) proteins by IHC: MLH1, MSH2, MSH6, PMS2
- Microsatellite Instability (MSI) by NGS
- Tumor Mutational Burden (TMB) by NGS



Rigorous Quality Standards

- CAP, CLIA, NYSDOH, ISO15189 accredited
- 66,000-square-foot clinical laboratory in Phoenix, Ariz;
115,000-square-foot blood-based laboratory in Irving, Texas (to open in 2020)
- Staffed by: bioinformaticians, oncologists, molecular geneticists, pathologists and PhD scientists



Limited Tissue Capabilities

- Tumor enrichment via microdissection
- Multiple reflex options to alternative technologies/methods



Rapid Turnaround Time

- 8-14 calendar days

→ www.CarisLifeSciences.com



Tumor Profiling

Comprehensive tumor profiling with Caris Molecular Intelligence® assesses DNA, RNA and Proteins with multiple technologies (NGS DNA-WES & RNA-WTS, PyroSeq, IHC, ISH) to reveal a more complete molecular blueprint to guide precise and individualized treatment decisions.



DNA

Next-Generation Sequencing
(Mutations, Indels &
Copy Number Alterations)

Whole Exome
~22,000 genes

- ✓ 200+ clinically relevant genes
- ✓ 700+ genes sequenced at average 500x and balance of exome at average 200x
- ✓ ~250,000 exonic/ intronic/ intergenic SNPs

All solid tumors



RNA

Next-Generation Sequencing
(Fusions & Variant Transcripts)

Whole Transcriptome
~22,000 genes

- ✓ 60 million read counts
- ✓ Gene fusions and variant transcripts
- ✓ Novel translocation detection independent of intronic breakpoint or fusion partner

All solid tumors



Protein

Immunohistochemistry

**Up to 15
Clinically Relevant IHCs**
(Optimized across
~25 Tumor Types)

- ✓ Multiple FDA approved CDx assays for different disease types (per label)
- ✓ Controls on every IHC slide
- ✓ 4 µm cuts to preserve tissue

All solid tumors

Caris Molecular Intelligence offers two different options
for tumor profiling, MI Profile™ and MI Tumor Seek™

MI PROFILE™

MI TUMOR Seek™

Whole Genome (NGS-DNA)	✓	✓
MSI	✓	✓
TMB	✓	✓
LOH/HRD	Coming Soon	
Whole Transcriptome (NGS-RNA)	✓	✓
IHC, ISH (Protein)	✓	Not Included
TAT	8-14 days	



Caris MAI™ – Molecular Artificial Intelligence

A revolutionary platform to identify unique “molecular signatures” using artificial intelligence, machine learning and multivariate analysis across the Caris clinical-molecular database to push the boundaries of innovation in precision medicine.



Genomic Prevalence Score

- Intended for cancer of unknown primary (CUP), or cases with atypical clinical presentation or clinical ambiguity.
- Provides a cancer type similarity assessment by comparing genomic (DNA) and transcriptomic (RNA) characteristics of the patient's tumor against other tumors in the Caris database.



Frontline Therapy Predictor

- Intended as an aid in gauging a patient's likelihood to benefit from FOLFOX chemotherapy (in combination with bevacizumab) as the first-line chemotherapy regimen in metastatic colorectal adenocarcinoma.
- Outcomes data from the MI FOLFOXai validation demonstrated a ~50% improvement of overall survival.



Immunotherapy Diagnostics Expertise



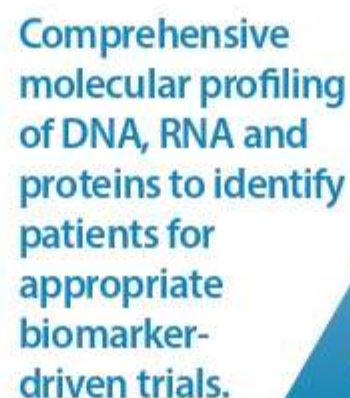
By harnessing the body's immune system to detect and destroy tumor cells, immune checkpoint inhibitors are rapidly ushering in a new era of precision medicine. Identify patients more likely to respond to immunotherapies with reliable molecular information based on validated assays for MMR, MSI, PD-L1 and TMB in our state-of-the-art laboratory.



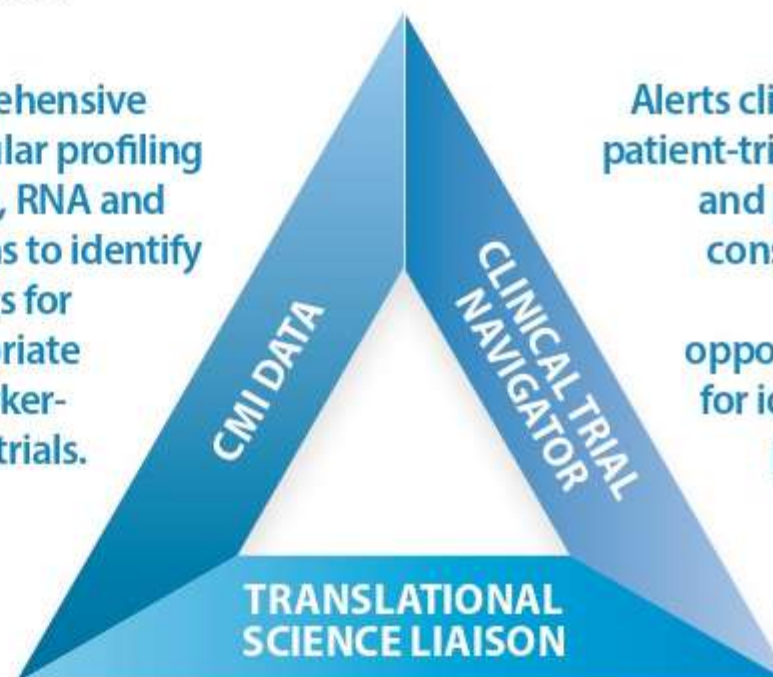
Clinical trials offer patients and physicians access to the latest drugs being developed to improve clinical outcomes. However, awareness of available trials is low and overall participation in oncology trials is less than five percent. Caris helps increase awareness and participation of clinical trials through MI Trials.

MI Trials provides:

- Real-time alerts to clinicians, matching patients with clinical trials in their area,
- Increased patient access to a larger number of potential treatment options, and
- Unsurpassed clinical trial support through a physician consultant team specializing in oncology.



Alerts clinician of patient-trial match and provides consultation on trial opportunities for identified patients.



Provides physician with expertise on CMI results.



Caris Molecular Intelligence reports are built to maximize clinical utility in an easy-to-interpret format. Clinicians need treatment information fast, that's why our report was built by oncologists for oncologist. With results back in 8-14 days, we'll help you find answers when you need them the most.



Contains
important
biomarker and
associated
therapy results

Provides important information about drug/ biomarker associations and comments from Caris pathologists and/or molecular geneticists

Lists
disease-relevant
biomarker
information, as well
as other altered
biomarker results

Navigate among therapies with potential benefit (noted in green)

- Identify therapies with potential lack of benefit (noted in red)

Utilize the Clinical Trials Connector to match biomarkers with open clinical trials through MI Portal



National Customer Care: 011-3988-5050

**Corporate Office: 12th Floor, Tower B, SAS Tower,
Medicity, Sector-38, Gurgaon-122001, Haryana, India**

Tel: 0124-3016500 | Fax : +91 124 4234468

National Reference Laboratory: Sector 18, Block E, Rohini, New Delhi, Delhi 110085

www.lalpathlabs.com | doctorfeedback@lalpathlabs.com



United States

888.979.8669



CustomerSupport@CarisLS.com



International

00 41 21 533 53 00



InternationalSupport@CarisLS.com

www.CarisLifeSciences.com

© 2020 Caris Life Sciences. All rights reserved. TN0240 v13 April 14, 2020